

Questel

Business Intelligence for Innovation Decision Makers



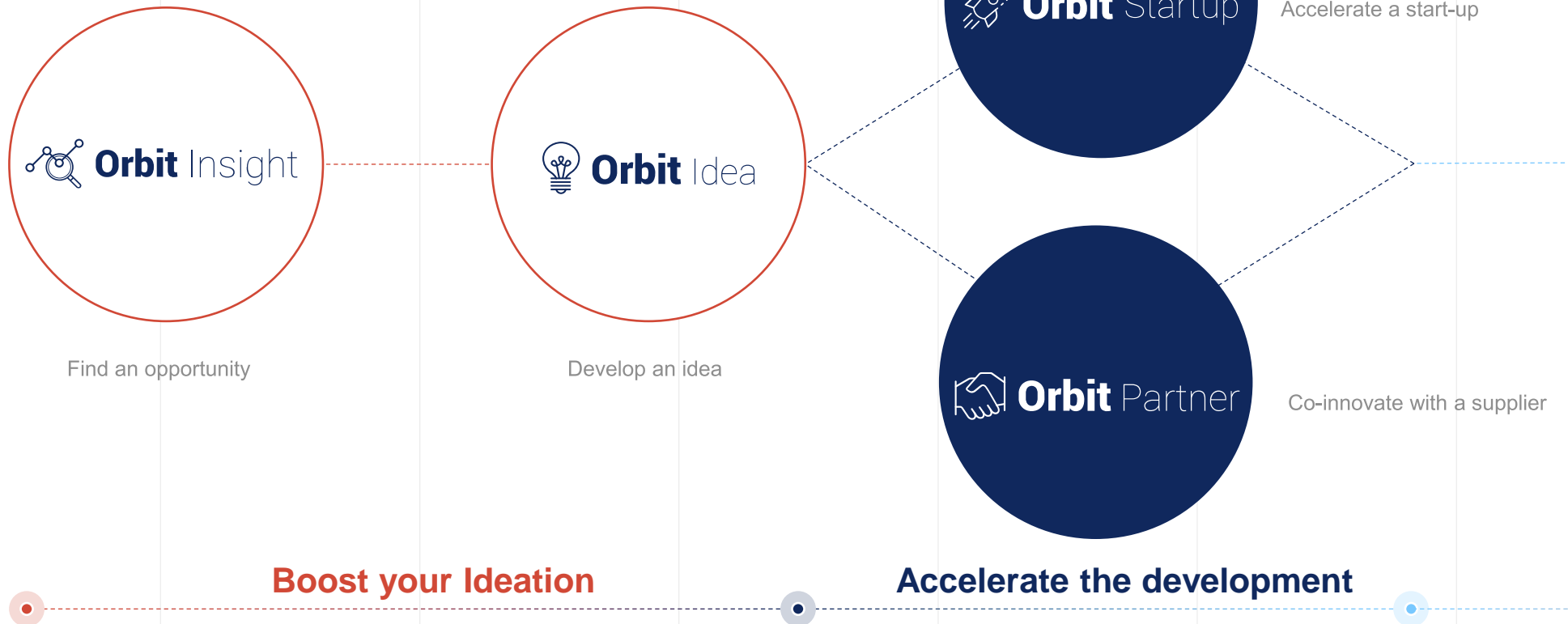
1

An integrated approach of innovation Management

Stimulate. Generate. Decide. Collaborate.

Innovation

Covering all needs to develop
innovation faster than before



Innovation

Covering all needs to develop
innovation faster than before



Get feedback from your clients



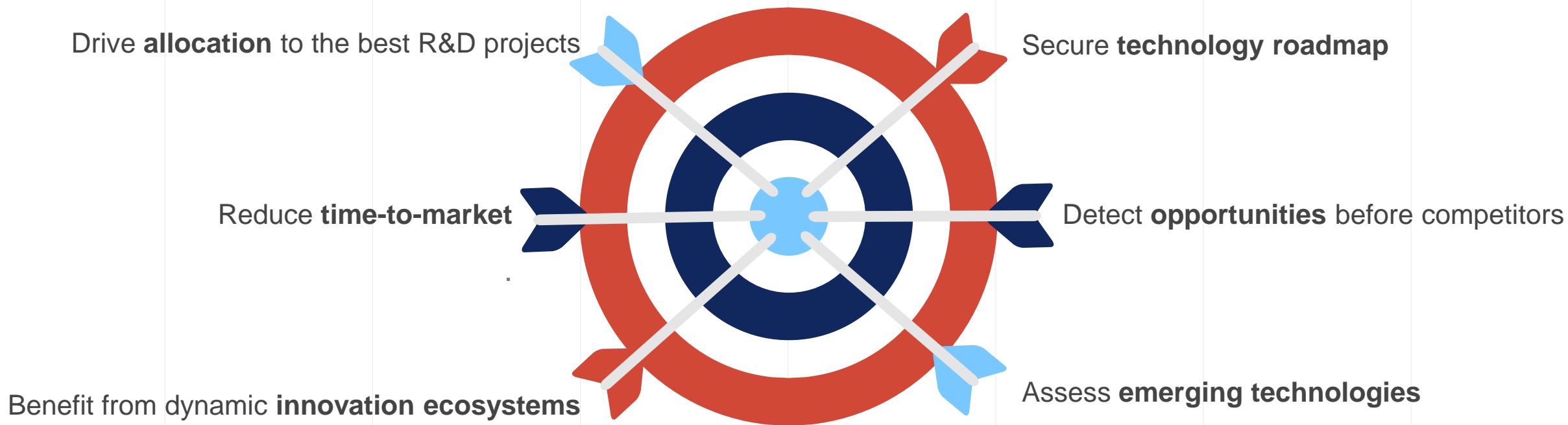
Manage your technology assets

Improve your efficiency

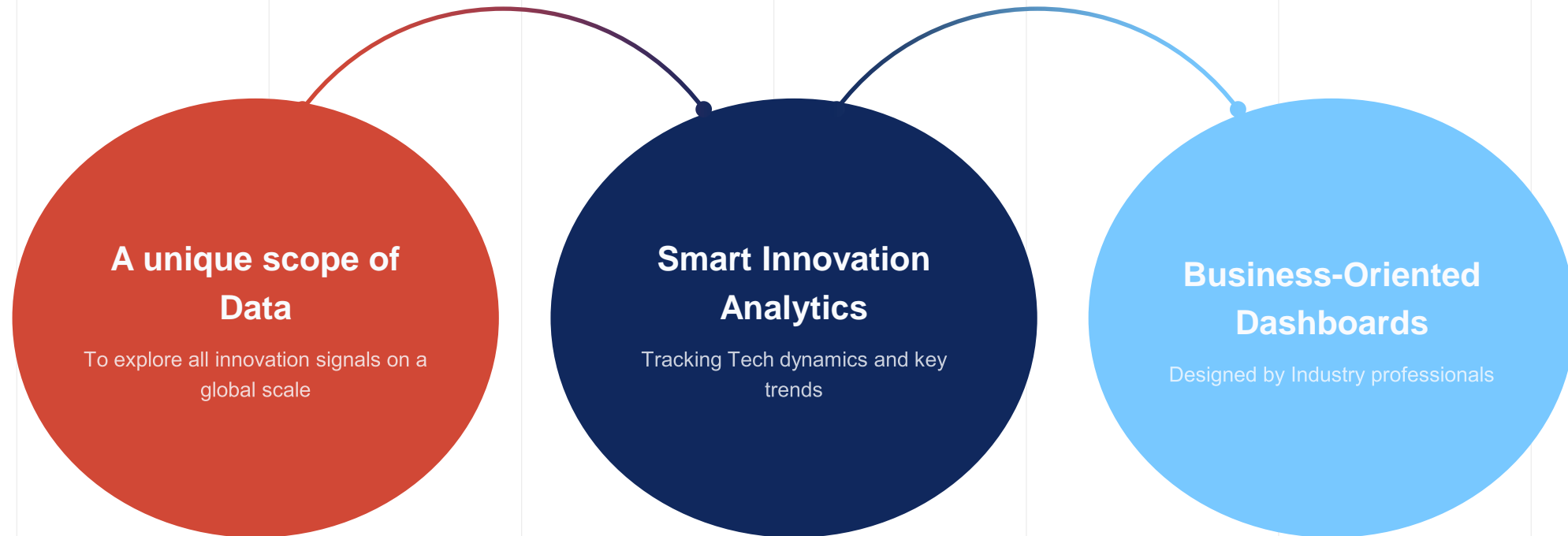
Questel



The **Big Picture** is vital to make informed decisions



We transform **Big Data** into efficient **decisions** and **operations**



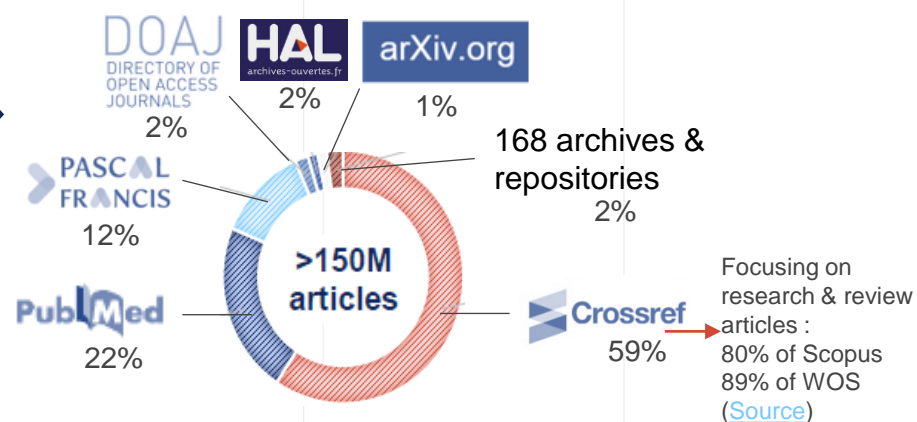


Data Scope

Patents

- 125 million publications
- 110 patent-issuing authorities
- 91 million patents
- 63 million patent families
- Updated daily

Scientific publications



Clinical trials

320k+ Clinical trials

ClinicalTrials.gov is a resource provided by the U.S. National Library of Medicine (NIH)

Projects & grants.

- USA : 120k+projects
SBIR : Small Business Innovation Research
STTR : Small Business TechnologyTransfer
- Europe : 140k+projects (H2020, FP5, FP7)
Horizon 2020 is the biggest EU Research and Innovation program ever with nearly €80 billion of funding available over 7 years (2014 to 2020).

Crunchbase

- 600K+ executives, entrepreneurs & investors
- 800K+ innovative companies & startups
- 17K+ events
393K funding rounds listed
70% of seed funding rounds are only on Crunchbase and nowhere else
- 115K+ acquisitions
From 15,710 news sources
50 years coverage
In 176 countries
90 analysts checking data



Smart Analytics & Discovery

based on machine learning powered by human cognition

1. Data Aggregation

200+ sources of data
Collect of 50+ types of data

2. Big Data Processing

Normalization & analysis
2M+ extracted concepts

3. Data Visualization

Fever graphs, sparklines, gauges,
geographic maps and infographics

4. Data Interpretation

Automatic informed conclusions based on
evidence coming from multiple sources

Insights

Patenting activity, tech trends, dynamics,
maturity, impact

Profiles

Competency mapping
Skills, domains, experience

Networks

50M+ collaborations identified
Intensity & influence

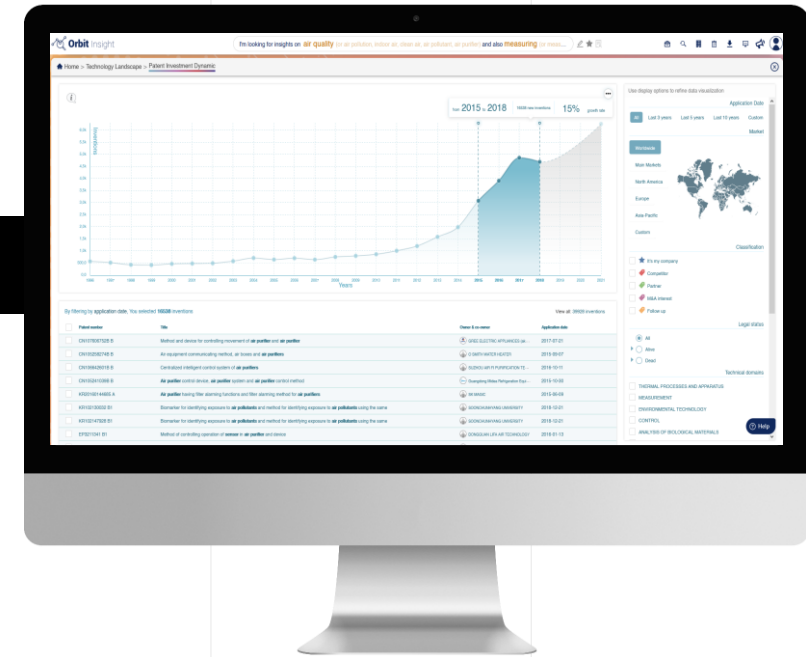
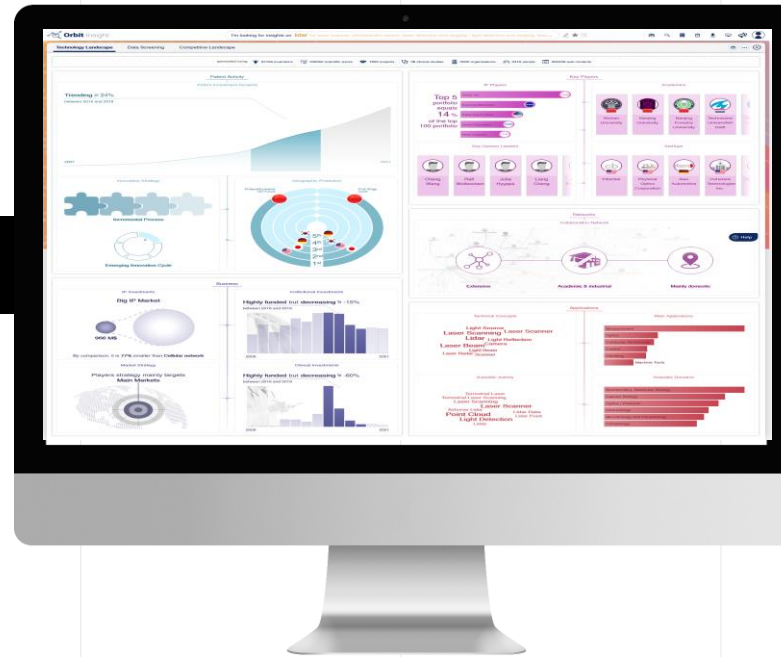
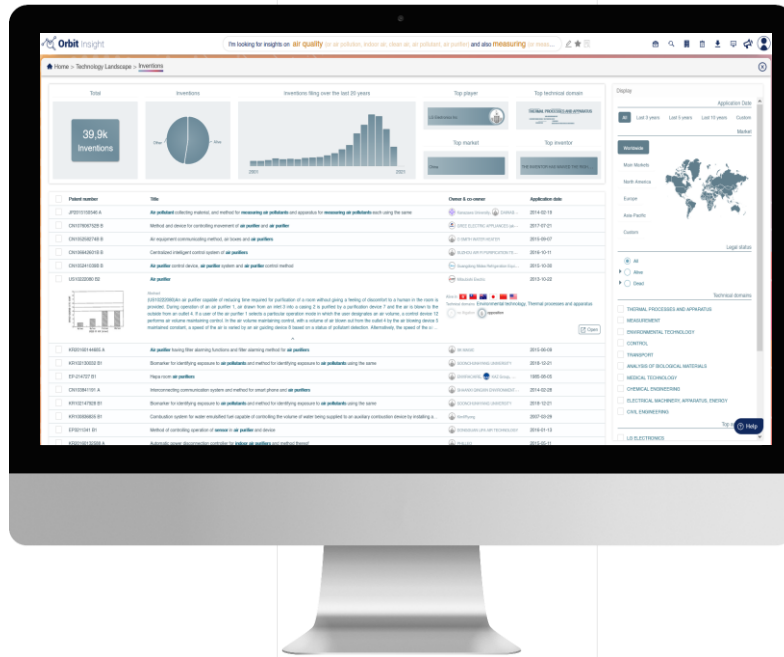
Decision support

Pro active suggestions
Comparisons



Business-Oriented Dashboards

Find the **technologies** and associated **actors** (companies, startups, academics) that will shape your business !



2

Access a global
Technology Landscape
in a few seconds

Access a global Technology Landscape

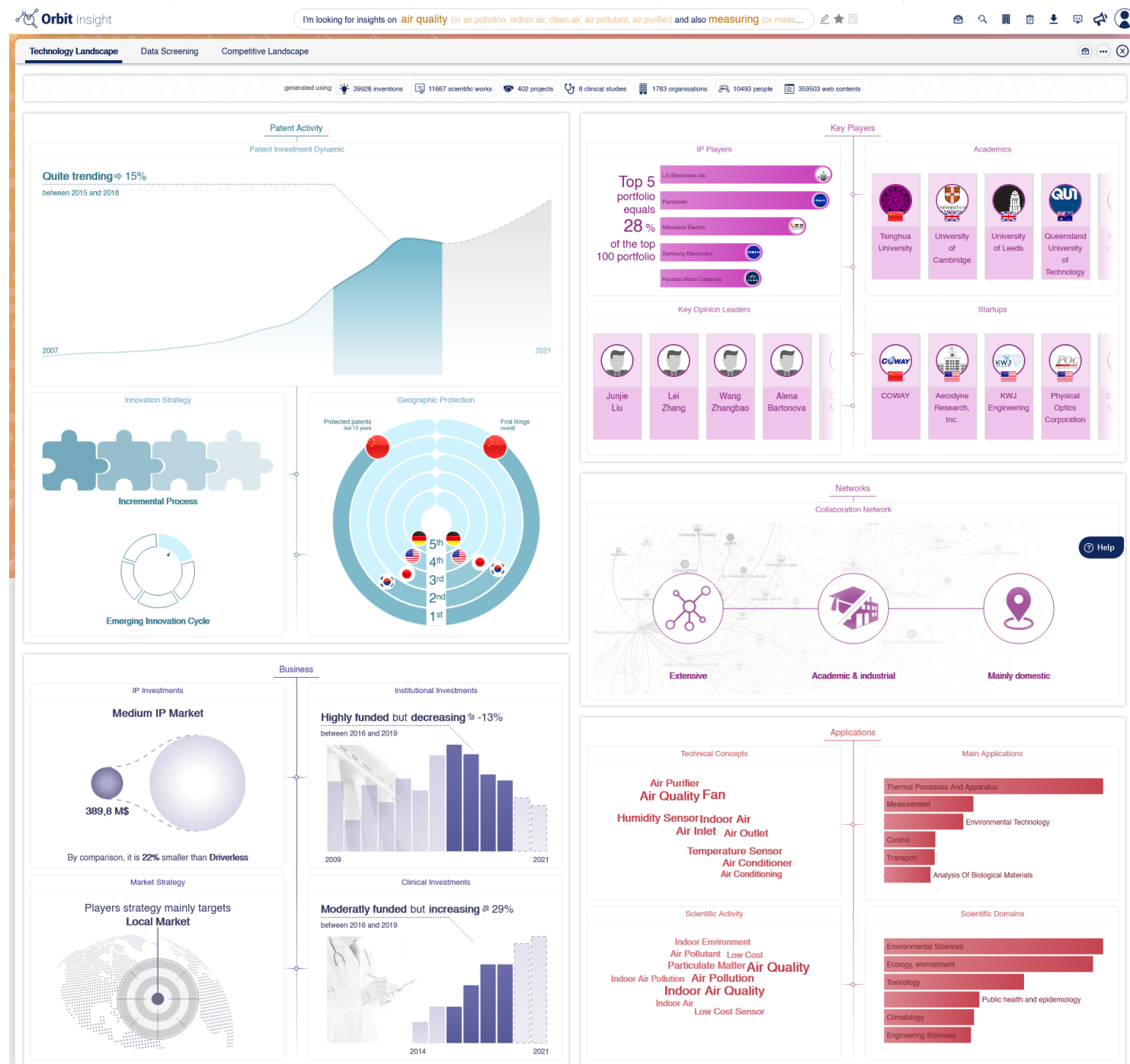
Search, uncover and monitor your innovation landscape

The first true **innovation intelligence** solution to provide a single source access to the latest trends, patents, publications, technologies, competitors, partners and startups.

The unmatched user experience associated with the largest **innovation data scope** helps you :

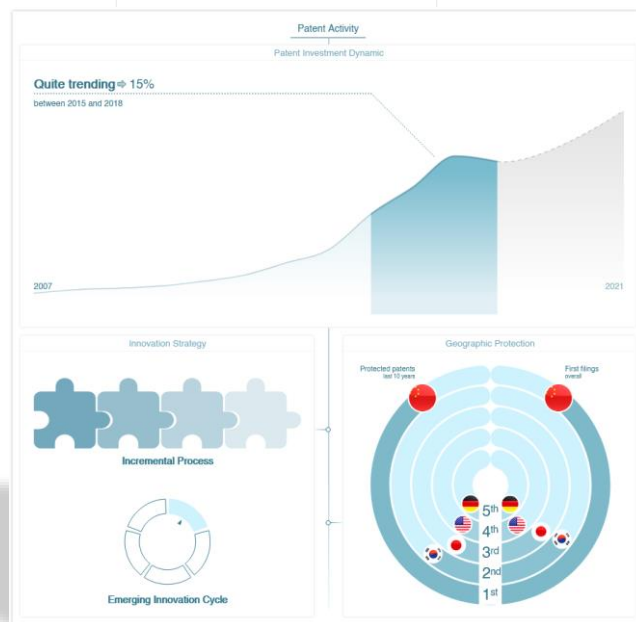
- predict **emerging trends** and **competitors' strategies**
- **Track companies**, identify **partners** and source **promising startups**

Fully automated and continually updated.



Patent Activity

Understand the IP dynamics on a specific topic



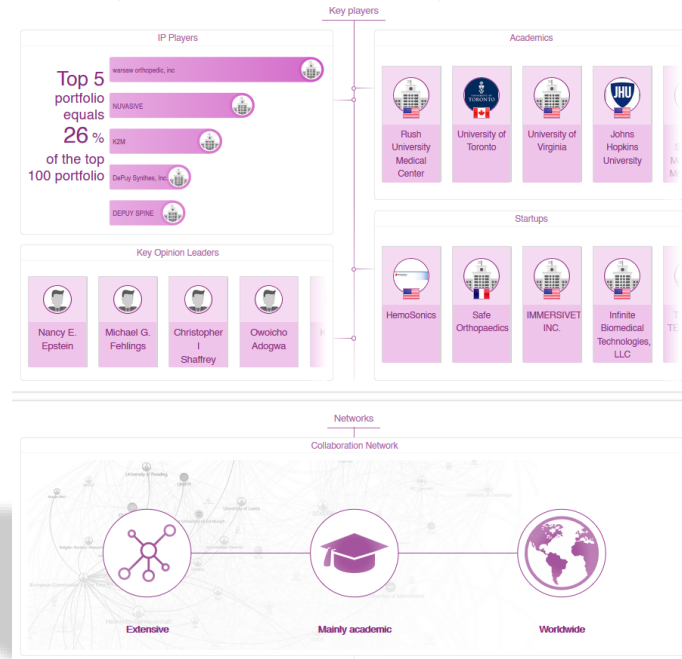
- ✓ Patent Investment dynamic
- ✓ Main geographic protection areas
- ✓ Innovation Strategy



- 👉 Is it a trending technology?
- 👉 Is it an emerging technology?
- 👉 Which is the most strategic territory?

Key Players

Understand the competitive landscape in a few seconds



- ✓ Major companies & Start-ups
- ✓ Major universities
- ✓ Key opinion leaders
- ✓ Collaborative networks & clusters

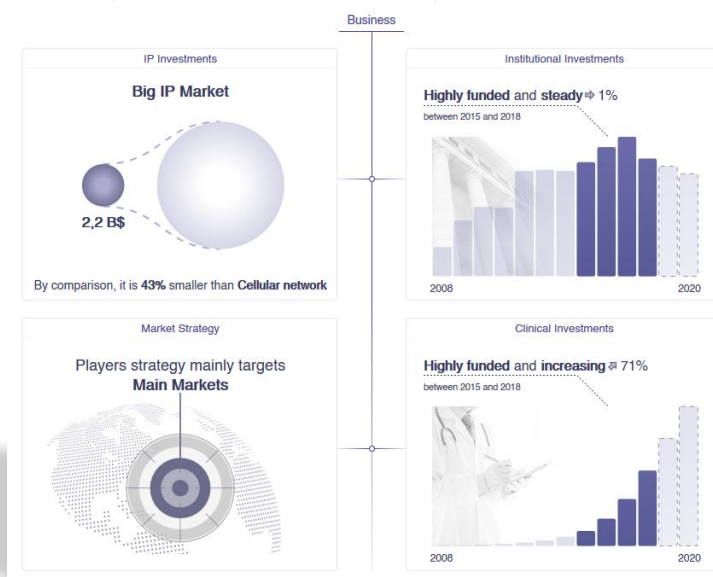


- Who are the key players?
- Who is the competition?
- Who are my next partners?

- Who are influencers on the topic? The start-ups to acquire?
- What are the existing clusters and essential networks?

Business Insights

Understand the market trends on a specific topic



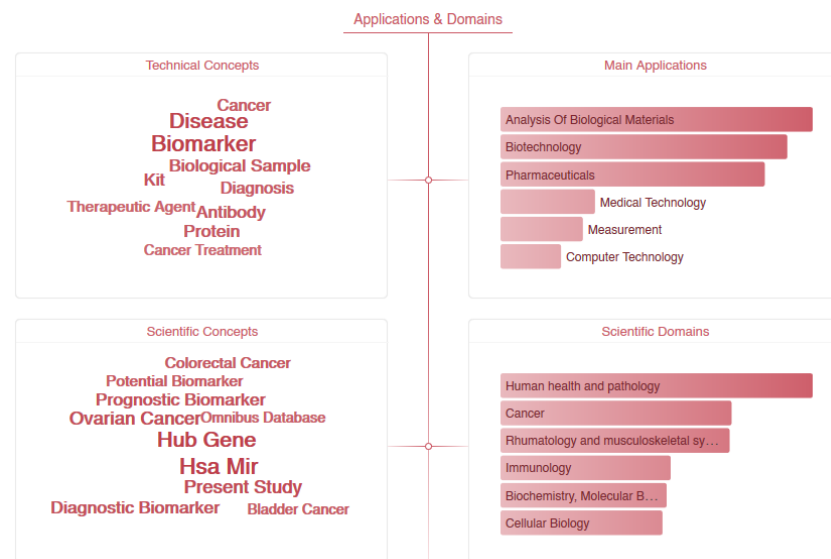
- ✓ IP Investments
- ✓ Institutional Investments and funding dynamics
- ✓ Market Strategy
- ✓ Clinical Investments



- 👉 Is this a high-stakes market?
- 👉 Are there significant IP/Institutional/Clinical investments?
- 👉 What is the strategy of players on a technology?

Applications

Understand the technological environment on a specific topic



- ✓ Technical Concepts
- ✓ Main applications
- ✓ Scientific Concepts
- ✓ Scientific Domains



👉 What's going on around this technology?

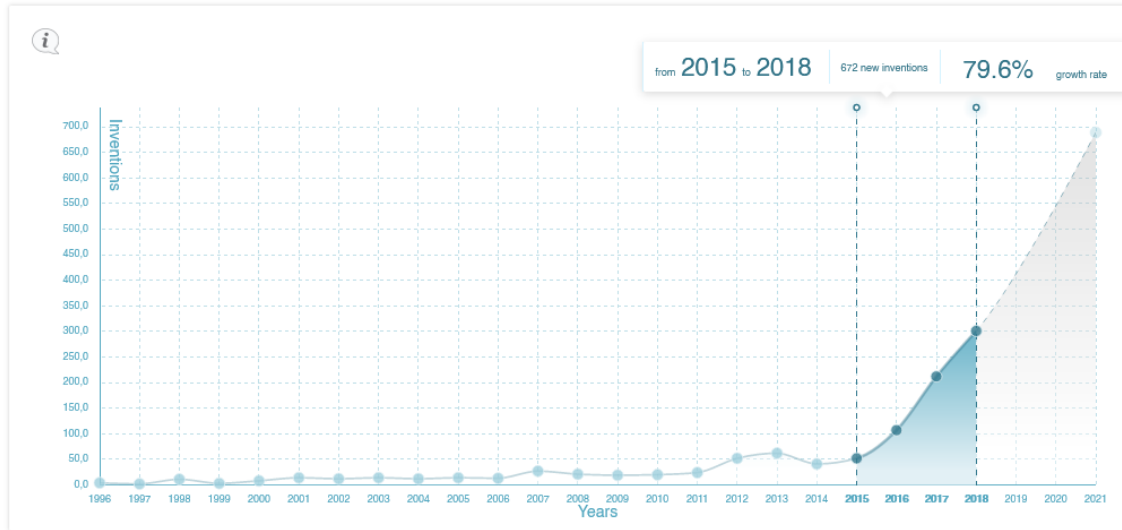
👉 Which research domains are involved?

Access a global Technology Landscape

Drill down into the data

Answer key business questions

Home > Technology Landscape > Patent Investment Dynamic



Use display options to refine data visualization

Application Date

All Last 3 years Last 5 years Last 10 years Custom

Market

Worldwide

Main Markets

North America

Europe

Asia-Pacific

Custom

Classification

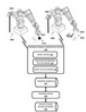
☐ It's my company

☐ Competitor

By filtering by application date, You selected 672 inventions

View all: 1609 inventions

Patent number	Title	Owner & co-owner	Application date
<input type="checkbox"/> EP3405910 B1	Deep machine learning methods and apparatus for robotic grasping	Google	2016-12-13
<input type="checkbox"/> EP3606707 A2	Machine learning methods and apparatus for semantic robotic grasping	Google	2018-06-28



Abstract
(EP3405910) Deep machine learning methods and apparatus related to manipulation of an object by an end effector of a robot. Some implementations relate to training a deep neural network to predict a measure that candidate motion data for an end effector of a robot will result in a successful grasp of one or more objects by the end effector. Some implementations are directed to utilization of the trained deep neural network to servo a grasping end effector of a robot to achieve a successful grasp of an object ...

Alive in 

Technical domains Computer technology, Control,


Handling 

[Open](#)


Deep machine learning methods and apparatus for robotic grasping

Invention

EP3405910_B1

Assignee  Google

Application date: 2016-12-13

Inventors 

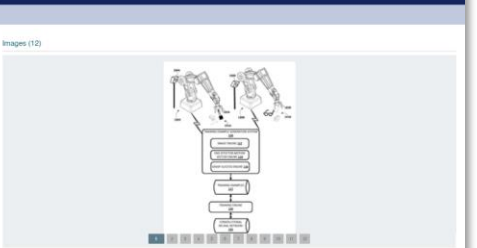
Abstract
(EP3405910) Deep machine learning methods and apparatus related to manipulation of an object by an end effector of a robot. Some implementations relate to training a deep neural network to predict a measure that candidate motion data for an end effector of a robot will result in a successful grasp of one or more objects by the end effector. Some implementations are directed to utilization of the trained deep neural network to servo a grasping end effector of a robot to achieve a successful grasp of an object by the grasping end effector. For example, the trained deep neural network may be utilized in the iterative updating of motion control commands for one or more actuators of a robot that control the pose of a grasping end effector of the robot, and to determine when to generate grasping control commands to effectuate an attempted grasp by the grasping end effector.

Object of invention

Advantages / Previous drawbacks

Claims
(EP3405910)
1. A method of training a convolutional neural network (125, 600), comprising: identifying, by one or more processors, a plurality of training

Images (12)



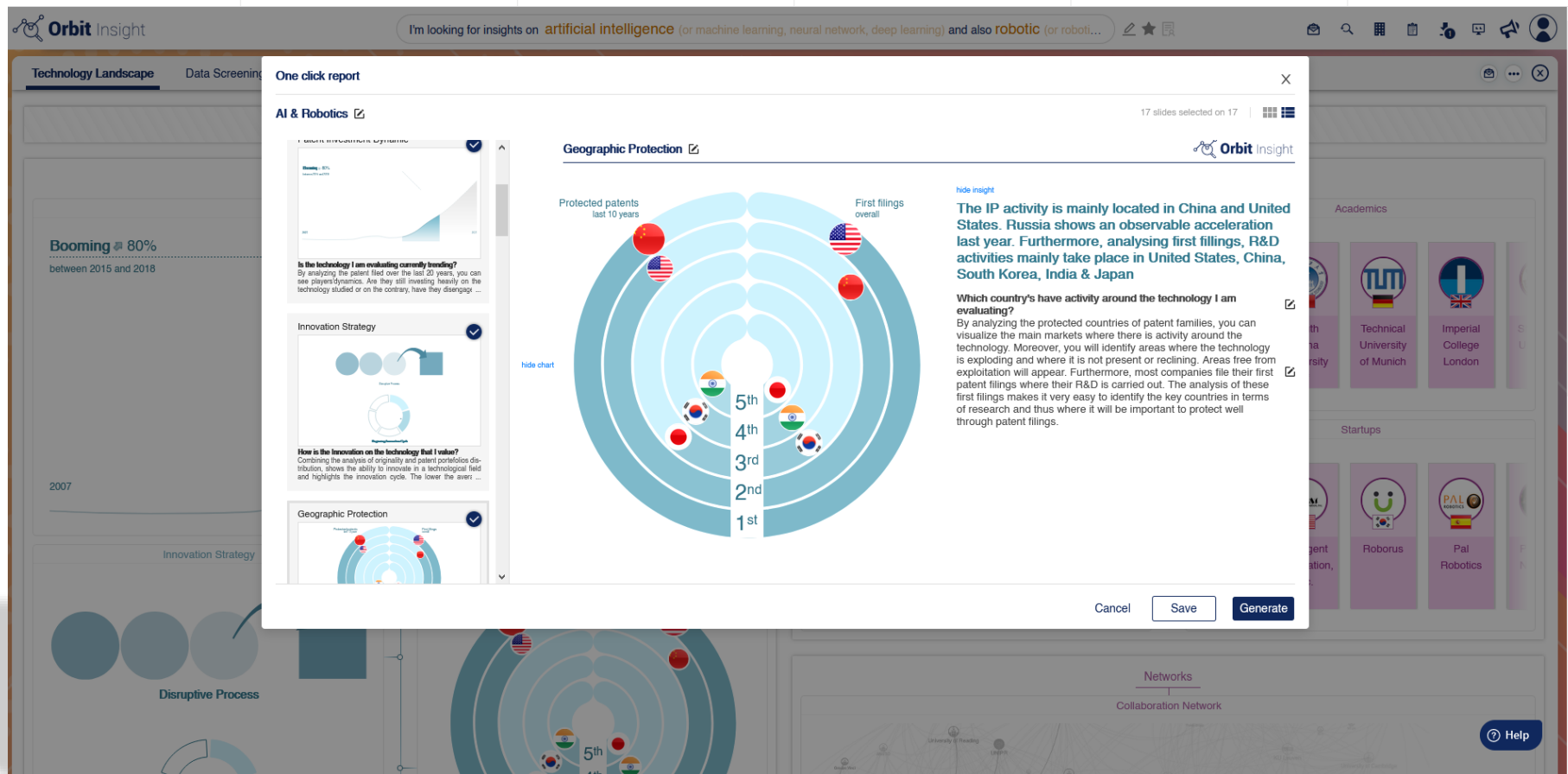
Technical Domains
Computer technology, Control, Handling

Description
(EP3405910)
Background
[0001] Many robots are programmed to utilize one or more end effectors to grasp one or more objects. For example, a robot may utilize a grasping end effector such as an "impactive" gripper or "regressive" gripper (e.g., physically penetrating an

Access a global Technology Landscape

Export

Easily generate attractive & comprehensive reports




Access a global Technology Landscape

Access Comprehensive Profiles

Explore key players' competencies, networks and influence

[Home](#) > [Technology Landscape](#) > [Organisations](#) > [IBM](#)


IBM
1 New Orchard Road, Armonk, United States - HQ

[Why](#)
[Last news](#)
[Corporate Activity](#)
[Patenting activity](#)
[Network & Influence](#)
[Scientific activity](#)

Overview

<http://www.ibm.com/>
<http://twitter.com/IBM>
<https://www.linkedin.com/company/ibm/>
 1 New Orchard Road,
 Armonk
 United States

Mainly works on
 [Networking and Telecommunication](#)
[Materials](#)
[Electronics](#)

Presentation IBM is a global technology and innovation company. It is the largest technology and consulting employer in the world, with more than 400,000 employees serving clients in 170 countr...

Get fresh news and latest trends directly in your mailbox with your **Insight Feed**.
 [Monitor](#)

Why IBM

Experience

IBM is one of the pioneers on this topic and they keep interest in it.

Momentum

IBM is interested in the topic right now and they're accelerating in the last few years.

Network & Influence

Although they have few partners, **IBM** is still well positionned in the network. Further domestic.

Patenting Activity

IP activity of **IBM** on the topic is moderate.

Scientific Activity

IBM has moderate scientific activity on the topic.

Buzz

IBM communicates on this topic on their website.

Last News

Date	Title
17 Mar 2021	SD Times news digest: Tricentis TestProject 2.0, IBM Quantum Composer and IBM Quantum Lab, and Sonatype acqui... buff.ly - Jakub Lewkowicz

Classify

[Remove from bookmarks](#)
[Add to export clipboard](#)
[Monitor](#)

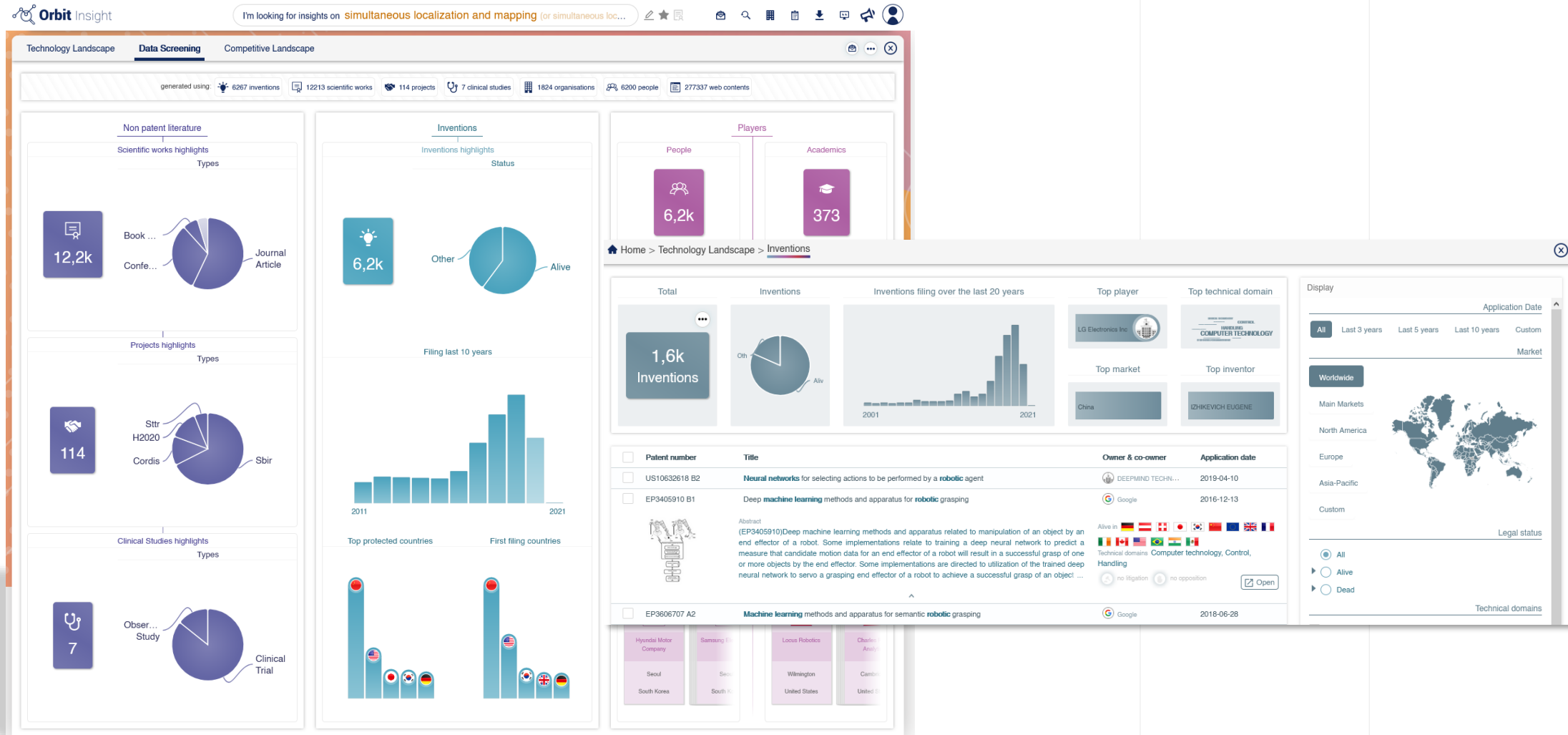
☐ It's my company
☒ Competitor
☐ Partner
☐ M&A interest
☐ Follow up



Access a global Technology Landscape

Access to the Inventions & NPL

Explore the inventions, the scientific publications, the projects or clinical studies related to a topic



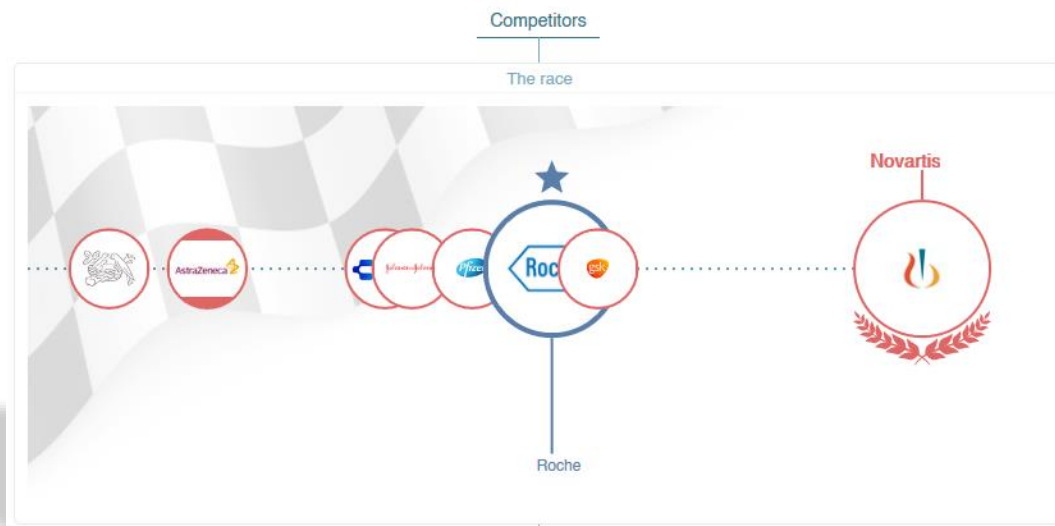
3

Access to a Competitive Landscape



Competitive Environment

Understand your competitive environment on a specific topic



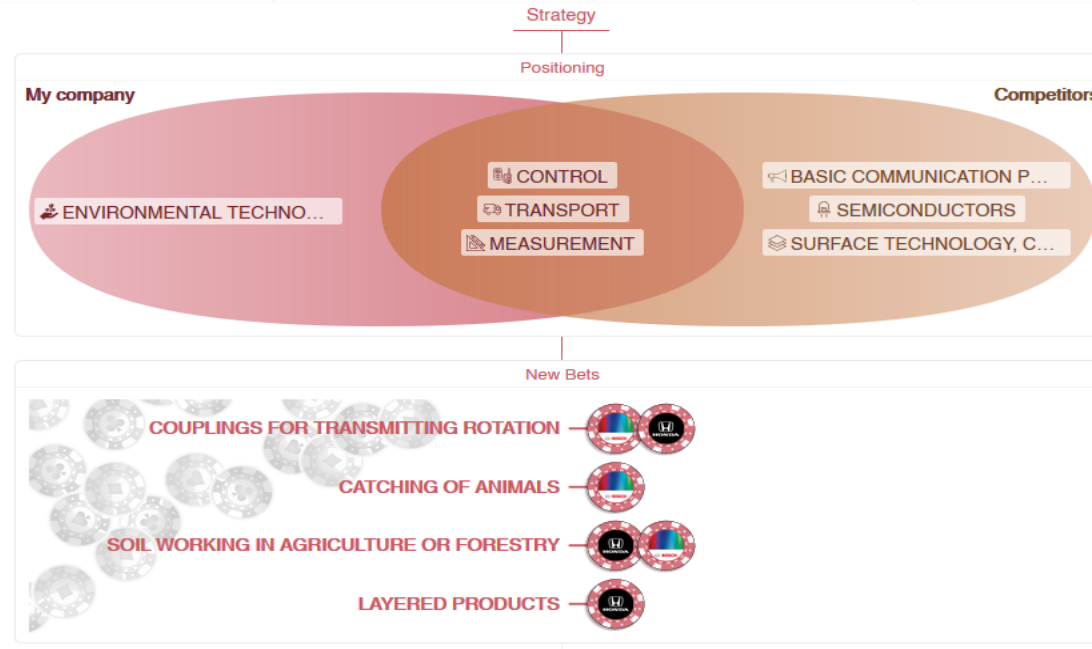
✓ Competitors race



- Who is the most experienced competitor?
- Which of my competitors is currently the most active?
- Which of my competitors has the most influential network?
- Which of my competitors has the most intense patent activity?
- Which of my competitors is the scientific leader?
- Which of my competitors communicates the most on their website?

Strategy

Understand the positioning of your competitors



✓ Competitors Positioning

✓ Competitors New Bets



In which areas are my competitors positioned?

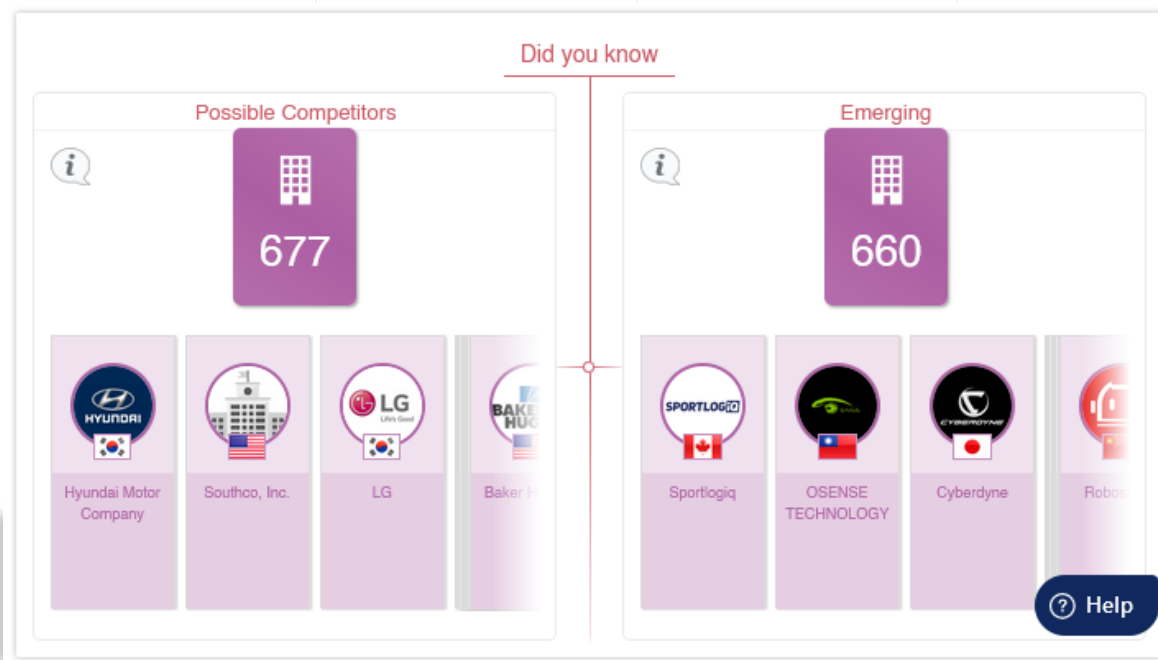


On which new technologies are my competitors positioning themselves?



Identify Competitors

Identify competitors on a specific topic



- ✓ Possible Competitors
- ✓ Emerging Competitors



- 👉 Are there any new competitors that I have not yet identified on this topic?
- 👉 Who are the emerging competitors on this topic?

Access to a Competitive Landscape

Watch your Ecosystem

Create newsletters to keep in touch



✓ Watch Companies

✓ Watch Searches



What are the new patents published by my competitors?



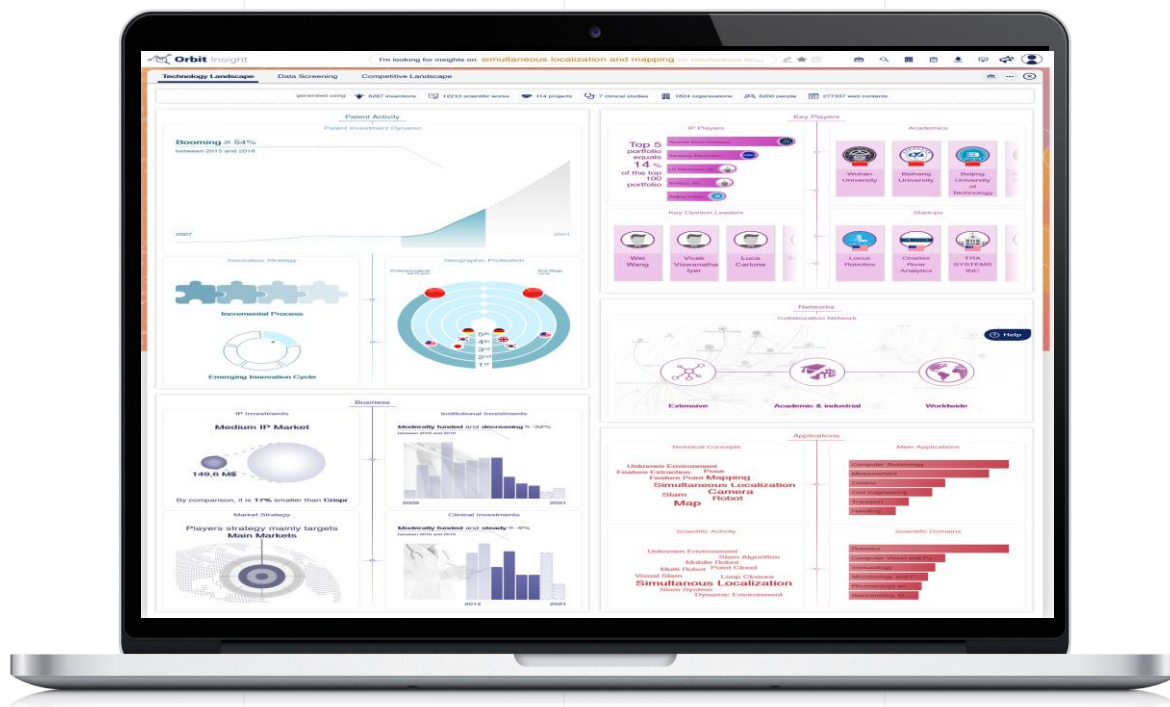
What new articles have been published for this topic?



Your Innovation Business solution

Real Time Dashboards

Centralize all your new markets and opportunities in one place



Questel



Unique Data Scope

- Cross search 500 data sources and 50 types of documents in a single platform



Smart Search

- Build complex queries
- Combine all innovation markers for a topic



Predefined Dashboards

- Save time and benefit from hands-on experience.
- Sourcing
- Trends



Exports & Reports

- PNG, Excel, PDF, PPT
- Do your own analysis



Newsletter

- Personalized news feed
- Competitive watch



Web application based on a SaaS model



API

- KMS integration
- Questel's software (Partnering, Capture...)

Thank you

Need more information ?



CONTACT US
help@questel.com

Access additional webinars and resources

www.questel.com/resources/

Visit our website

www.questel.com

Questel